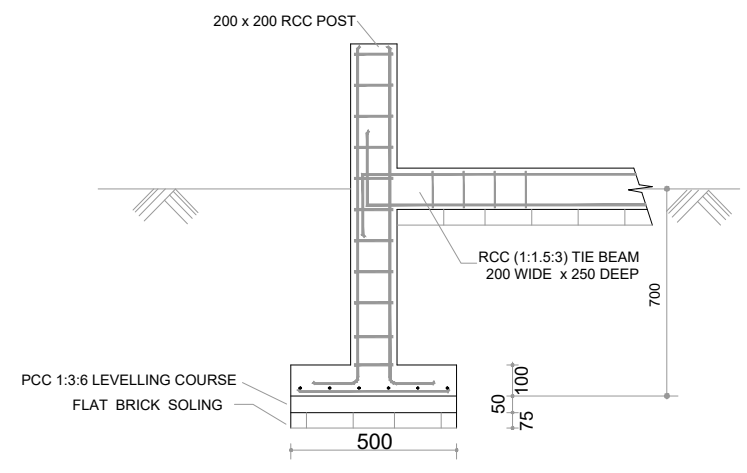
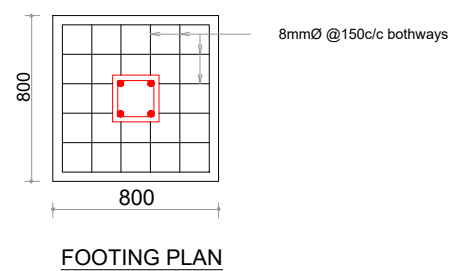


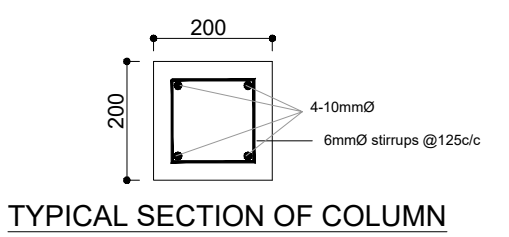
TYPICAL SECTION OF CHAIN LINK FENCING WALL FOR SPAN IJ



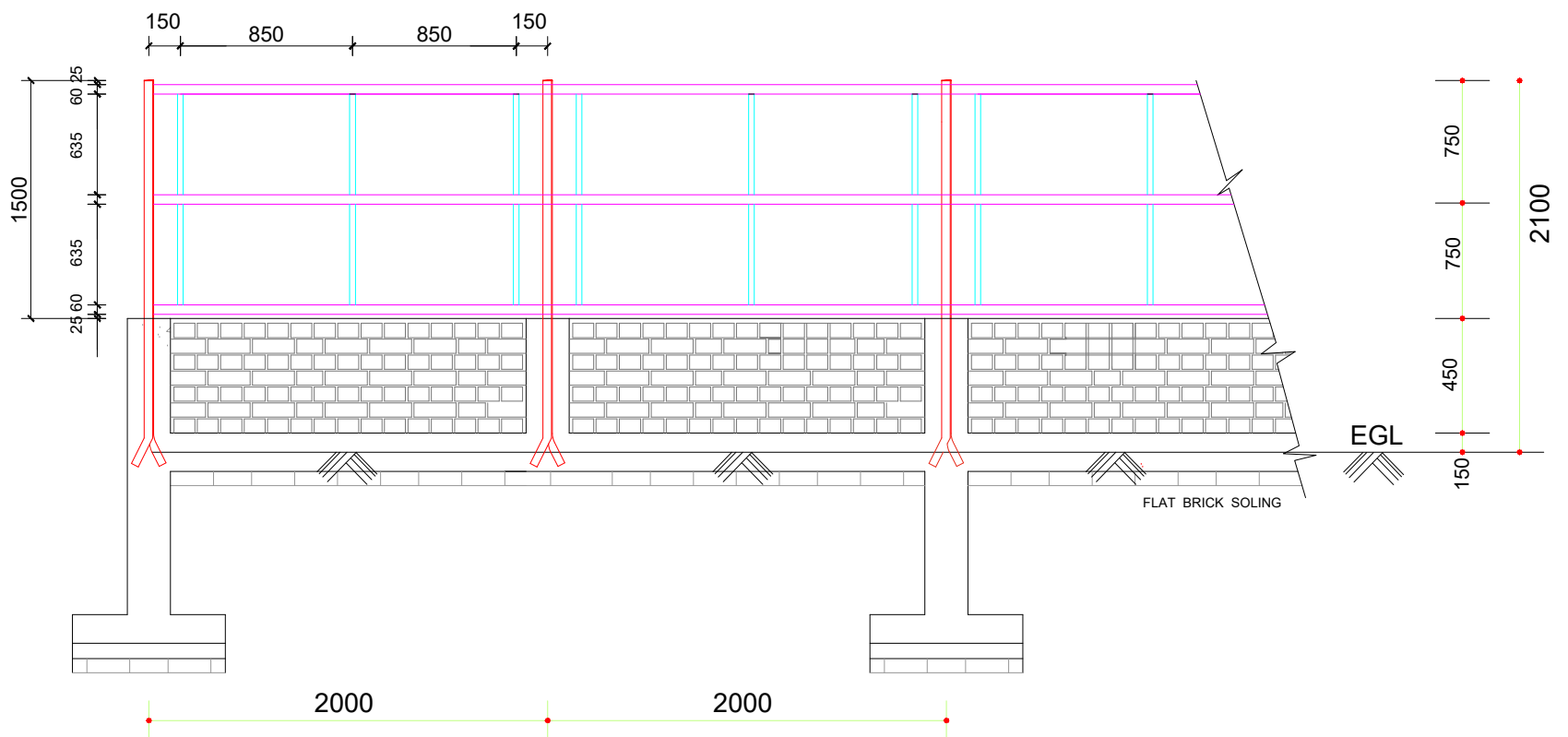
TYPICAL SECTION OF ORDINARY POST



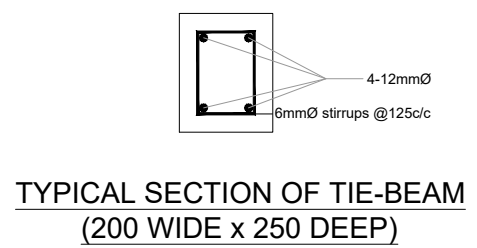
FOOTING PLAN



TYPICAL SECTION OF COLUMN



DETAIL OF STEEL FRAME SUPPORTING WPC CLADDING FRO SPAN IJ

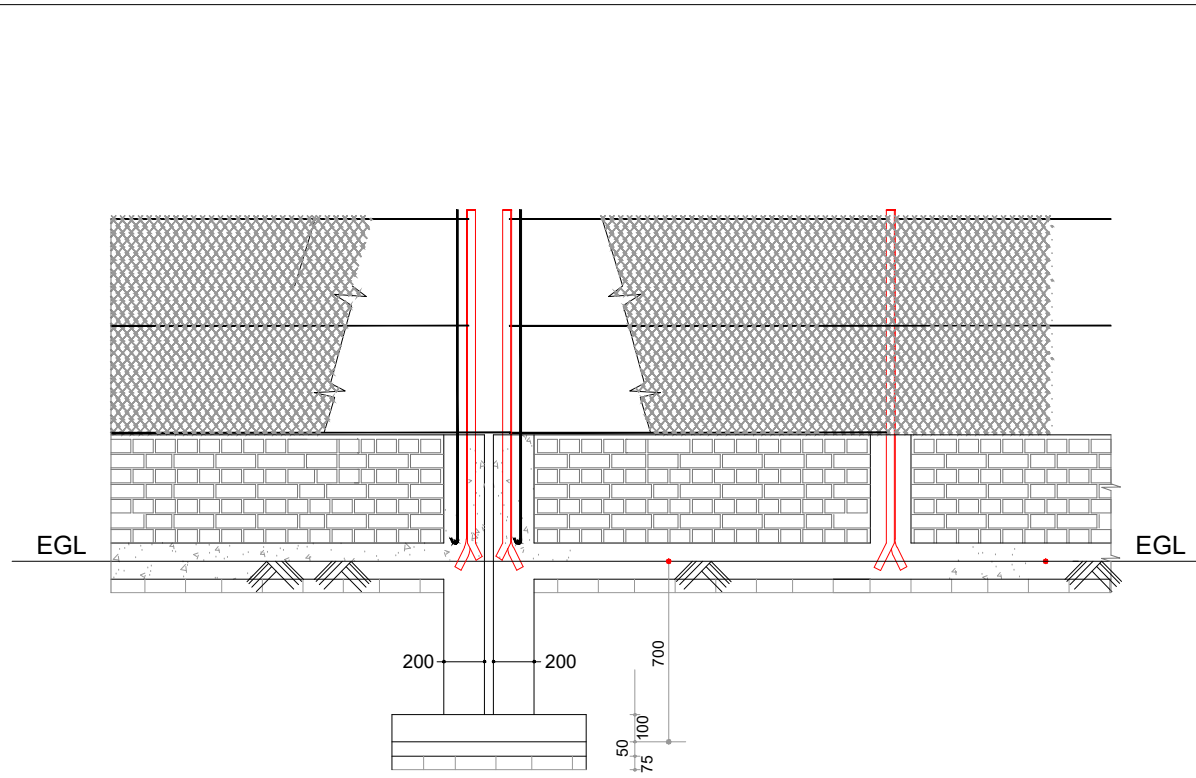


TYPICAL SECTION OF TIE-BEAM (200 WIDE x 250 DEEP)

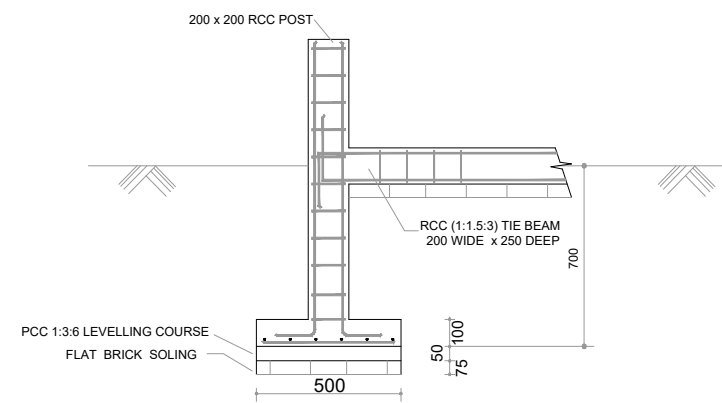
SL.NO.	MEMBER DESIGNATION	UNIT WEIGHT (kg/m)	COLOUR CODE
1.	ISA 65 x 65 x 5	4.9	
2.	RHS 60 x 40 x 2.9	4.12	
3.	SHS 30 x 30 x 3.2	2.49	

ASSAM POWER GENERATION CORPORATION LTD.  
 OFFICE OF THE CHIEF GENERAL MANAGER(H&C),  
 BIJULEE BHAWAN, PALTANBAZAR  
 RENOVATION AND MODIFICATION OF BOUNDARY WALL  
 AT HON'BLE CHAIRMAN BUNGALOW, APGCL  
 TYPICAL SECTION OF CHAIN LINK FENCING WALLS,  
 FOOTINGS & COLUMNS FOR SPAN IJ

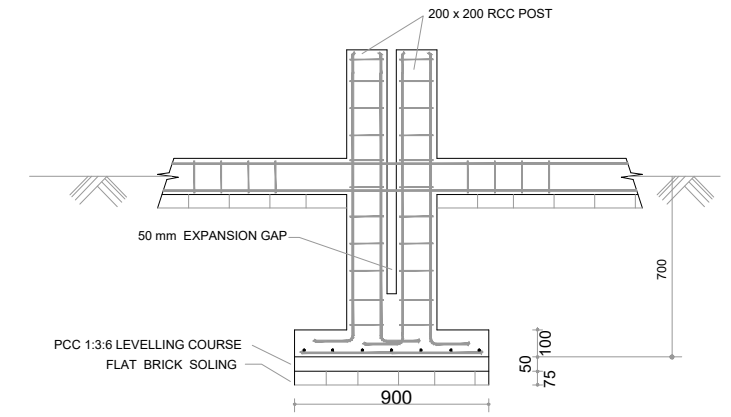
DWG NO: APGCL/CGM(H&C)/BOUNDARY WALL NARENGI /2022/02  
 DATE JANUARY, 2022 JANUARY, 2022



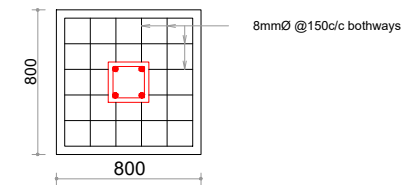
TYPICAL SECTION OF EXPANSION JOINT FOR SPAN DE, EF AND FG



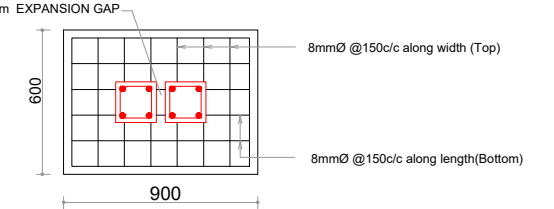
TYPICAL SECTION OF ORDINARY POST



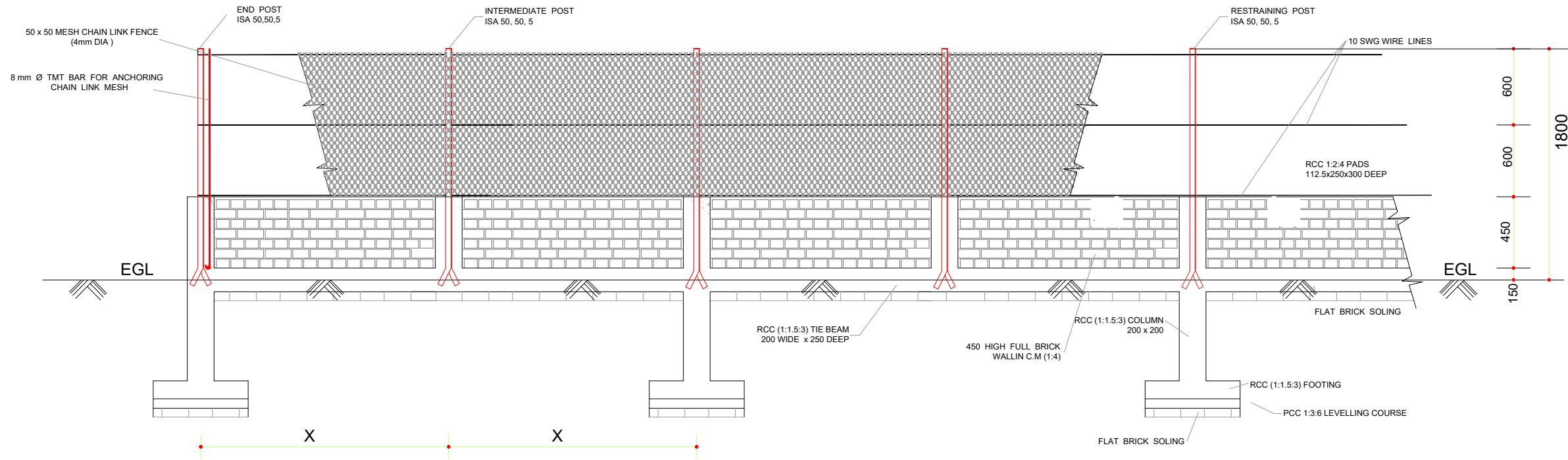
TYPICAL SECTION OF EXPANSION POST



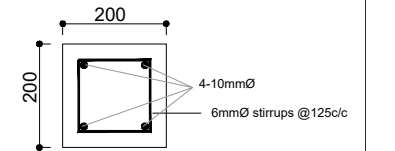
FOOTING PLAN



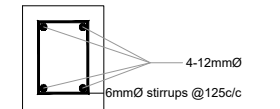
FOOTING PLAN FOR EXPANSION JOINT



TYPICAL SECTION OF CHAIN LINK FENCING WALL FOR SPAN DE, EF AND FG



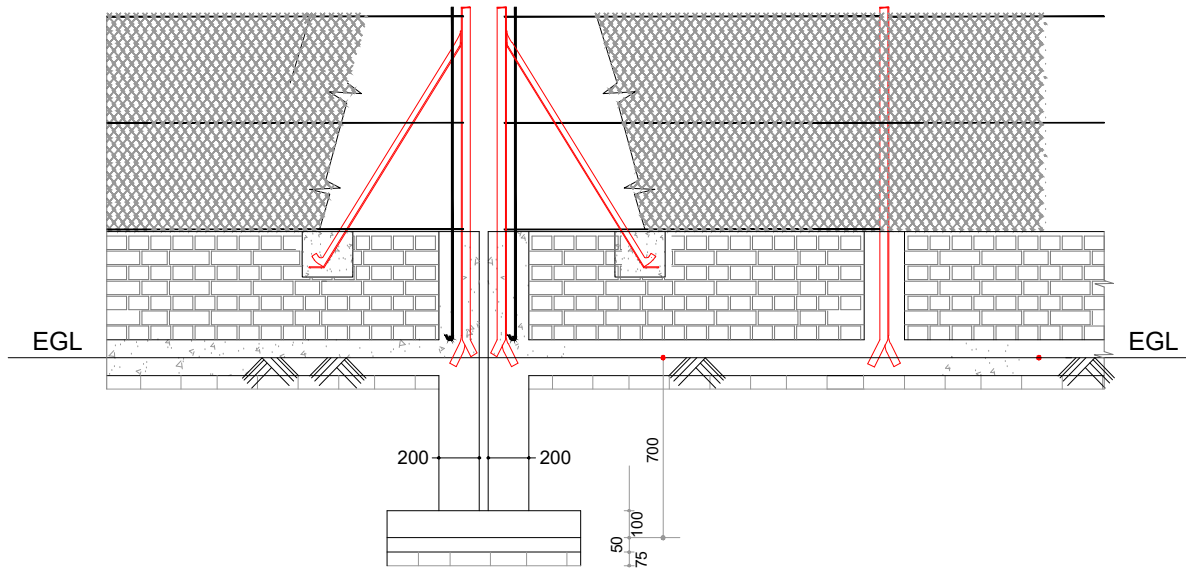
TYPICAL SECTION OF COLUMN



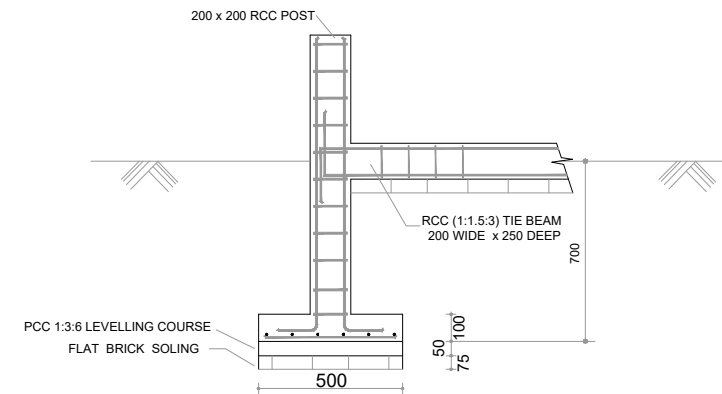
TYPICAL SECTION OF TIE-BEAM (200 WIDE x 250 DEEP)

NOTE:  
VALUE OF X SHALL BE TAKEN FROM DWG NO: APGCL/CGM(H&C)/BOUNDARY WALL NARENGI /2022/01

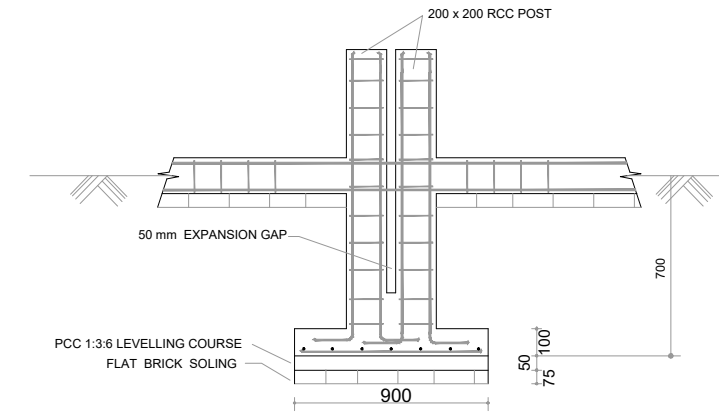
ASSAM POWER GENERATION CORPORATION LTD.		
OFFICE OF THE CHIEF GENERAL MANAGER(H&C), BIJULEE BHAWAN, PALTANBAZAR		
RENOVATION AND MODIFICATION OF BOUNDARY WALL AT HON'BLE CHAIRMAN BUNGALOW, APGCL		
TYPICAL SECTION OF CHAIN LINK FENCING WALLS, FOOTINGS & COLUMNS FOR SPAN DE, EF AND FG		
DWG NO: APGCL/CGM(H&C)/BOUNDARY WALL NARENGI /2022/03		
DATE	JANUARY, 2022	JANUARY, 2022



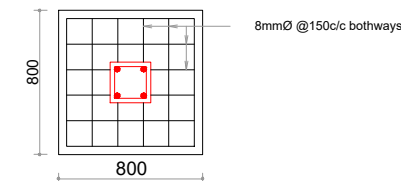
TYPICAL SECTION OF EXPANSION JOINT



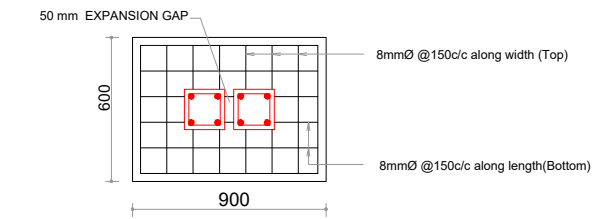
TYPICAL SECTION OF ORDINARY POST



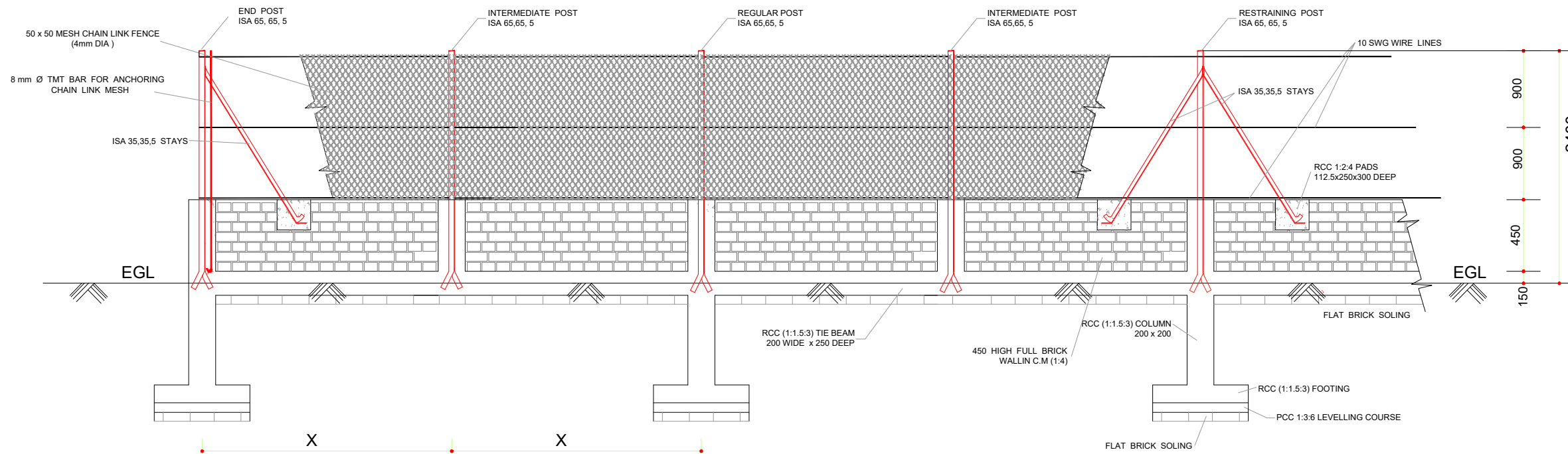
TYPICAL SECTION OF EXPANSION POST



FOOTING PLAN

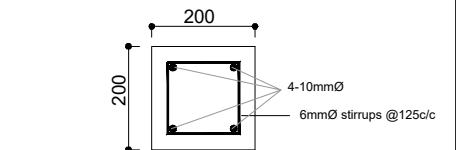


FOOTING PLAN FOR EXPANSION JOINT

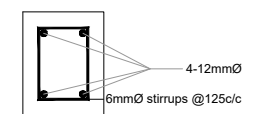


TYPICAL SECTION OF CHAIN LINK FENCING WALL AB, BC, CD AND GH

NOTE:  
VALUE OF X SHALL BE TAKEN FROM DWG NO: APGCL/CGM(H&C)/BOUNDARY WALL NARENGI /2022/01

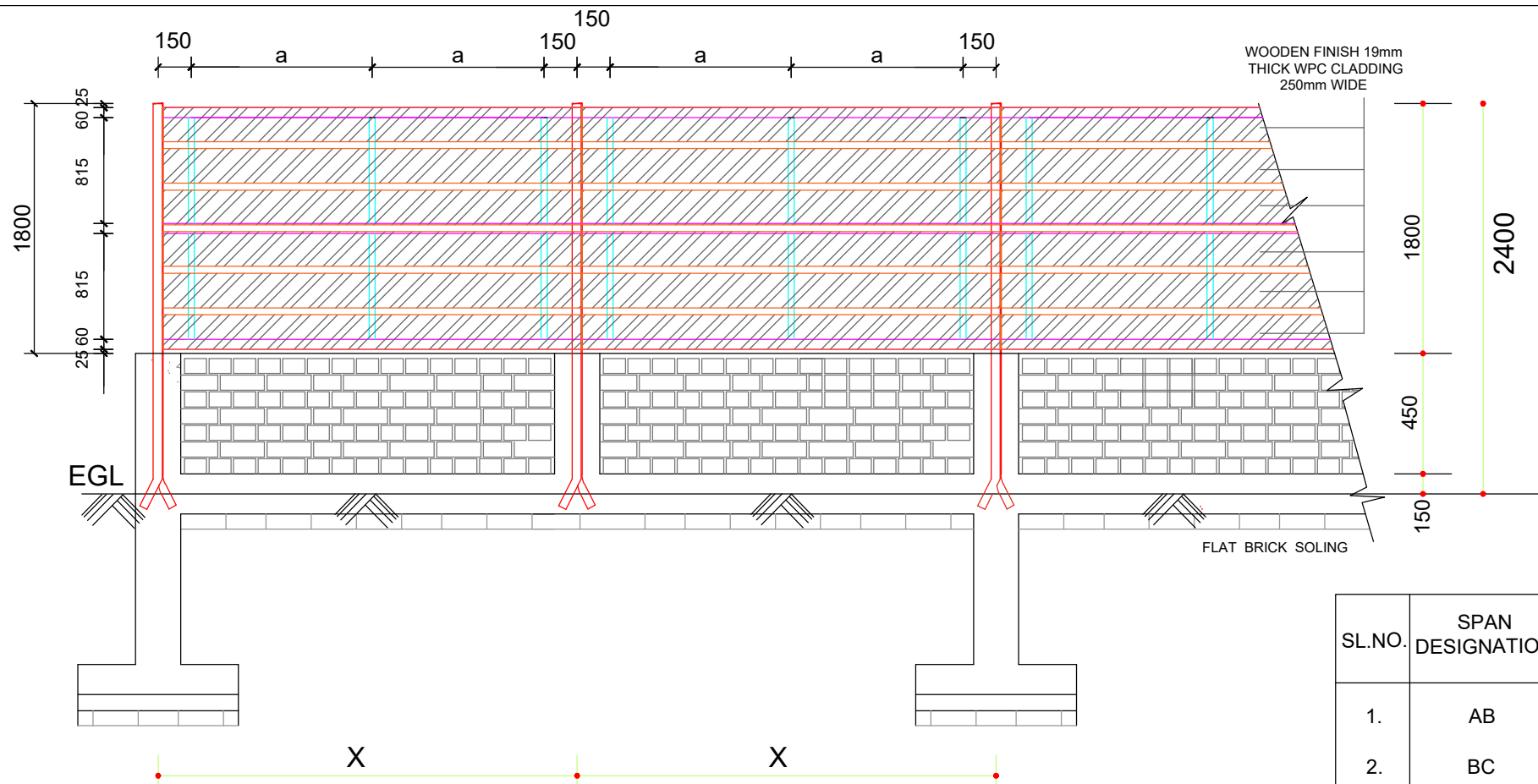


TYPICAL SECTION OF COLUMN



TYPICAL SECTION OF TIE-BEAM  
(200 WIDE x 250 DEEP)

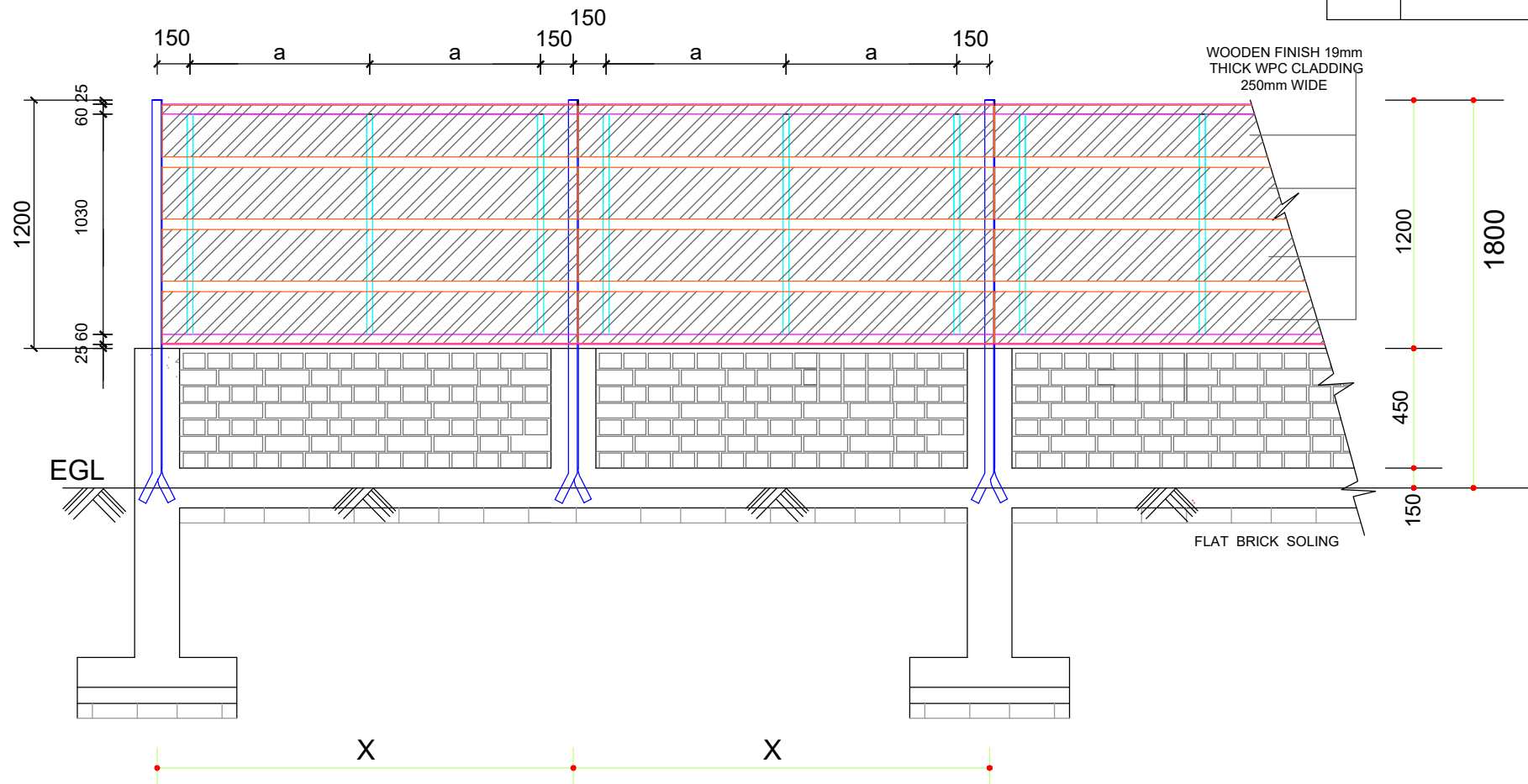
ASSAM POWER GENERATION CORPORATION LTD.	
OFFICE OF THE CHIEF GENERAL MANAGER(H&C), BIJULEE BHAWAN, PALTANBAZAR	
RENOVATION AND MODIFICATION OF BOUNDARY WALL AT HON'BLE CHAIRMAN BUNGALOW, APGCL	
TYPICAL SECTION OF CHAIN LINK FENCING WALLS, FOOTINGS & COLUMNS FOR SPAN AB, BC, CD AND GH	
DWG NO:	APGCL/CGM(H&C)/BOUNDARY WALL NARENGI /2022/04
DATE	JANUARY, 2022



**DETAIL OF STEEL FRAME SUPPORTING WPC CLADDING FOR SPAN AB, BC AND CD**

SL.NO.	MEMBER DESIGNATION	UNIT WEIGHT (kg/m)	COLOUR CODE
1.	ISA 65 x 65 x 5	4.9	
2.	ISA 50 x 50 x 5	3.8	
3.	RHS 60 x 40 x 2.9	4.12	
4.	SHS 30 x 30 x 3.2	2.49	

SL.NO.	SPAN DESIGNATION	SPAN LENGTH	DISTANCE BETWEEN POSTS 'X'	TOTAL HEIGHT	HEIGHT OF CLADDING	VALUE OF 'a'
1.	AB	7.6 m	1900mm	2.4m	1.8m	800 mm
2.	BC	3.8m	1900mm	2.4m	1.8m	800 mm
3.	CD	4.2 m	2100mm	2.4m	1.8m	900 mm
4.	DE	18.9 m	1890mm	1.8m	1.2m	795 mm
5.	EF	11.2 m	1870mm	1.8m	1.2m	785 mm



**DETAIL OF STEEL FRAME SUPPORTING WPC CLADDING FOR SPAN DE AND EF**

- NOTE:**
- Single extruded WPC (Wood Polymer Composite) solid board laminated with PVC foil of minimum 14 micron thickness (having wooden finish) of approved design comprising of virgin polymer of K value 58-60 (Suspension Grade), calcium carbonate and natural fibers (wood powder/ rice husk/wheat husk) and non toxic additives (maximum toxicity index of 12 for 100gms) having minimum density of 650 kg/cum and screw withdrawal strength of 1800 N (Face) & 900 N (Edge), minimum compressive strength 50 N/mm<sup>2</sup>, modulus of elasticity 850 N/mm<sup>2</sup> and resistance to spread of flame of Class A category with property of being termite/borer proof, water/moisture proof and fire retardant shall be used for cladding purpose.
  - Structural steel hollow sections wherever used shall conform to IS 4923: 1997.
  - All R.C.C. works shall be cast with M20 (1:1.5:3) grade of concrete.
  - Brickwork shall be cast with cement mortar in the proportion 1:4.
  - The exposed concrete and brick work surfaces shall be plastered with cement mortar in the ratio 1:6.
  - Until and otherwise specified all dimensions are in mm and only written dimensions should be followed.
  - Drawing not to scale

ASSAM POWER GENERATION CORPORATION LTD.  
 OFFICE OF THE CHIEF GENERAL MANAGER(H&C),  
 BIJULEE BHAWAN, PALTANBAZAR  
 RENOVATION AND MODIFICATION OF BOUNDARY WALL  
 AT HON'BLE CHAIRMAN BUNGALOW, APGCL  
 TYPICAL SECTION OF BOUNDARY WALL WITH WPC  
 CLADDING AND STRUCTURAL STEEL DETAIL FOR  
 SPAN AB, BC, CD, DE AND EF

---

DWG NO: APGCL/CGM(H&C)/BOUNDARY WALL NARENGI /2022/05  
 DATE JANUARY, 2022